

MATIMOP
Israeli Industry Center for R&D

SIBED @ Telecom Israel 2006

Welcome !

SIBED DIRECTORATE PRESENTATION

SIBED @ Telecom Israel 6.11.2006



SIBED

Sweden - Israel joint R&D
and Test bed Program,
mainly in areas of ICT and
Security



SIBED - Background

- Implements Sweden- Israel MOU for Industrial R&D Cooperation (2000) between companies and and Research organisations.
- 6 Year Program, Launched: May 2002
- “Joint” agencies yearly funding budget – 2.5M Euro
- Program administration:
 - In Israel - OCS/Matimop
 - In Sweden - VINNOVA

Funding Agencies

- VINNOVA
- Office of the Chief Scientist Office (OCS) /
Ministry of Industry Trade & Labor

Sibed Previous Results

- 5 calls
- 38 applications
- ~ 100 companies and research institute

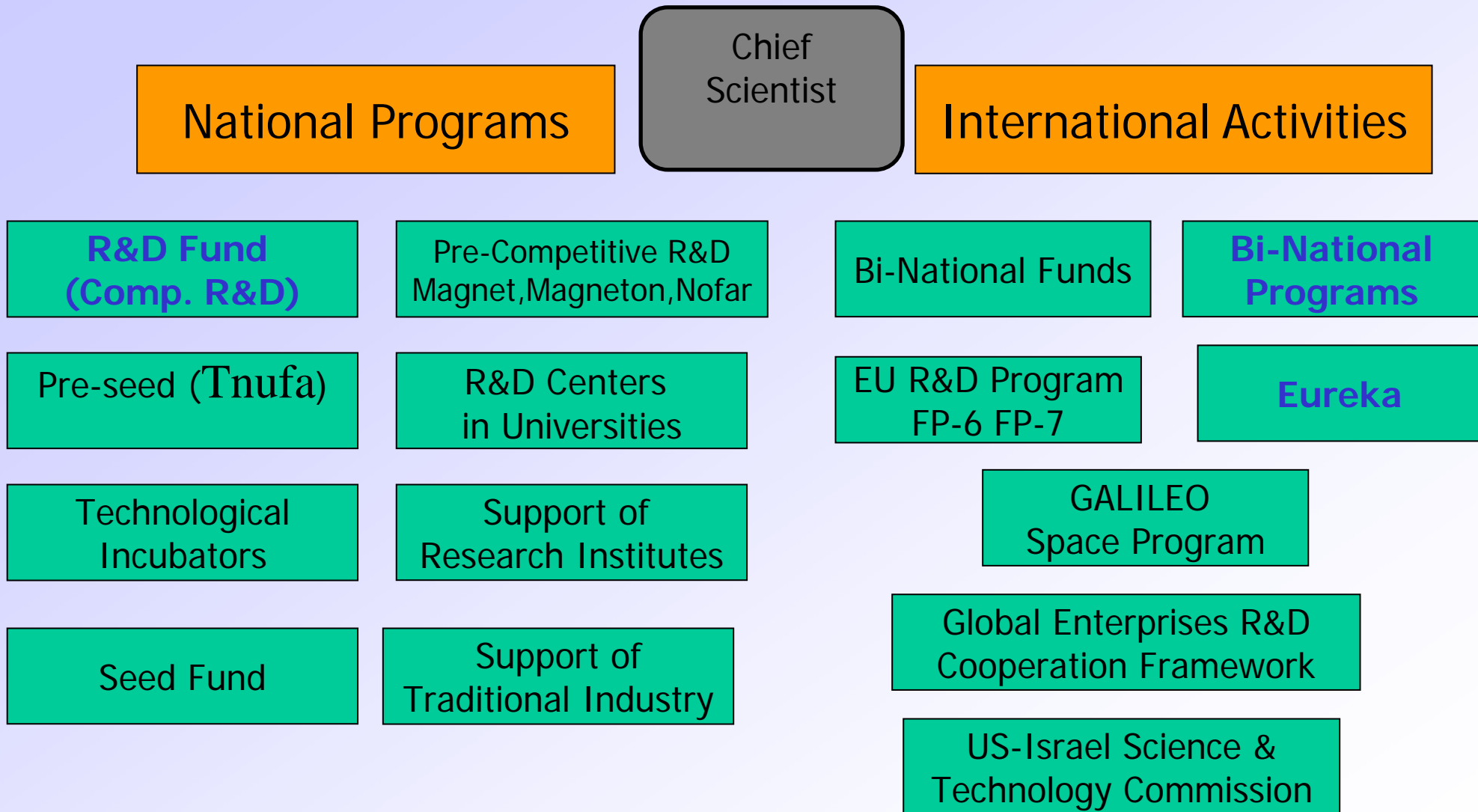
Sibed Objectives

- To encourage the cooperation of Israeli and Swedish hi-tech Companies Research Centers and Academia, in :
 - Developing new ICT and Security technologies, applications and services
 - Developing new testbed methodologies
 - Utilizing testbed or other verification environments

Sibed Characteristics

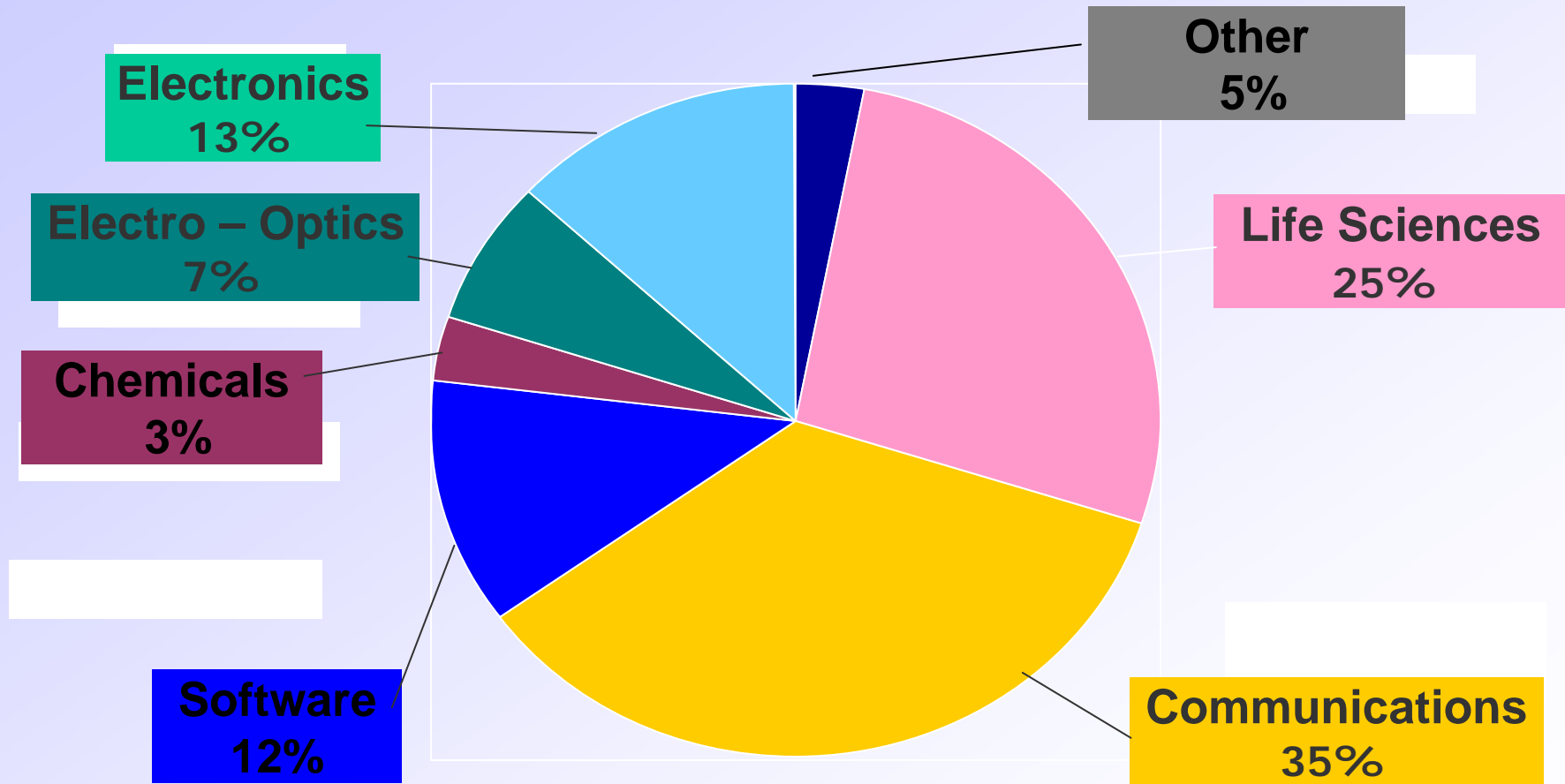
- **ICT and Security** Technologies
- **Competitive** near market Industrial R&D
- **Testbed** and/or test bed methodologies involvement
- **Joint Participation** and contribution of both sides to the project (minimum 1 company from each side)
- Added value of the **cooperation**
- **Short term** projects (12-18 month)

Activities of the O.C.S.





OCS Grants by Technological Sectors 2005



R&D Fund

Competitive R&D

1. 2005 Budget – NIS 790 M (180 USD)
2. Supports competitive industrial R&D projects
3. Grants are awarded on a sliding scale from 30%-50% R&D budget
4. Royalties payment is 3%-5% of future products' sales
5. Supports over 1000 projects from more than 500 companies each year

MATIMOP - the Israeli Industry Center for R&D

- **National agency**
- **Administers OCS programs**
- **In charge of implementing more than 20 international R&D cooperation platforms on behalf of the OCS**
- **Provides access to OCS' national funding schemes**

SIBED as a Bi – National Program

A Local program:

- Governed - by the R&D Law
- Approval - by the R&D committee
- Financed - by the R&D Fund
- Subjected to - the regulations and procedures of the OCS

A Bi-national program:

- Implemented by MATIMOP on behalf of OCS
- Considering the **cooperation value and benefit**
- Special provision for **IP sharing**

VINNOVA

Swedish agency for Innovation Systems

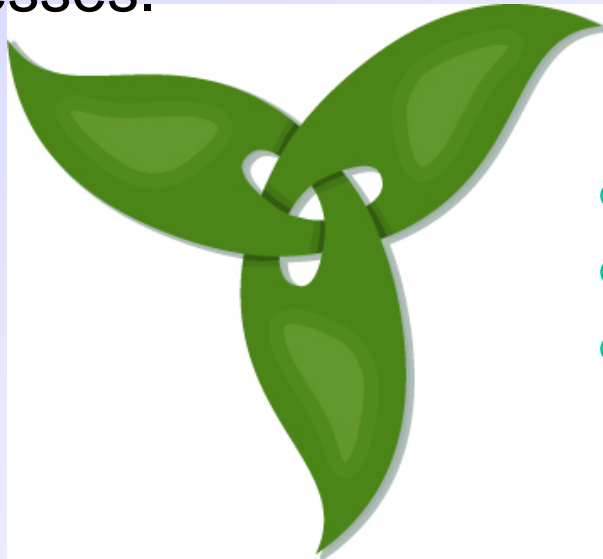
VINNOVA Objectives

VINNOVA is working to achieve sustainable growth by developing efficient innovation systems and financing problem-oriented research

Efficient innovation systems

Sustainable growth requires interaction between business, research, and policy/the public sector – Triple Helix.

The interaction results in new products, services, and processes.



Interaction between

- Business
- Research
- Policy/Public Sector

Resources

Towards accomplishing our mission, we have:
150 employees

An annual budget of approximately USD 150
millions

A board of directors and programme councils
made up of representatives of the research
community, business, and policy/public sector

Two phase submission - Why?

- Joint Filtering & match mechanism at Phase 1
- Improving match success of phase 2
- Overcoming procedural differences between the two sides
- Improve the quality of the projects

Workflow of Application – Phase 1

1. **Submission** - to the Sibed directorate (not to the agencies)
2. **Forms** – phase 1 application forms (identical at both sides)
3. Eureka Labeling
4. **Evaluation** –
 - Evaluators from both sides
 - Meeting with the company – not mandatory
 - Brief evaluation report
5. **Decision** - joint decision of Sibed directorate

Workflow of Application – Phase 2

1. **Submission**: To the agency at each side
2. **Forms**:
 - Phase 2 application forms (identical at both sides)
 - Local forms at each side – if any
3. **Evaluation**: At each side according to the local procedures
4. **Decision**: Joint of the decisions of both sides
5. **Funding**: Each agency funds the local participants according to the local regulations and conditions

Evaluation Criteria

1. The **commercial** aspect (potential, markets, marketing, customers, sales, margins, manufacturing, economical benefits etc')
2. The **technological** aspect (innovation, originality, risk, technological assets, IP, etc')
3. The **capabilities and competence** of the participants
4. The added value and contribution of the **cooperation**
5. The **benefit** to both sides

The 6th Call

- Submission dates:
 - Phase 1 – closing at 2/3/2007
 - Phase 2 – closing at 15/5/2007
- Projects Start: Q3/07

Thank You